

# UAMS

UNIVERSITY OF ARKANSAS  
FOR MEDICAL SCIENCES



**Presented by: Office of the Vice Chancellor for Research**  
**Date: February 5, 2013**



# Agenda

## ■ Updates & Timely Information from Research Support:

- ⊕ Office of the VCR
- RSC
- IRB
- IACUC
- HIPAA
- UAMS Library
- BioVentures
- ⊕ Cost/Grants Accounting
- COI
- ⊕ ORSP
- ⊕ ORC
- DLAM
- OGSP
- ⊕ TRI/Research
- Medical Informatics



# ORSP Update

Suzanne Alstadt, Director, ORSP

- **Brief TRACKS Update**
  - Development for pre and post award ongoing
  - Pilots, training, and go-live date are to be determined
  - Continue to use ARIA in the interim



# ORSP Update

Suzanne Alstadt, Director, ORSP

## ■ ASSIST

- **Application Submission System & Interface for Submission Tracking**
- System used for multi-project grants applications to NIH (P01, P20, etc)
- Web interface
- Allows different people to work on different sections of the application at the same time



# ORSP Update

Suzanne Alstadt, Director, ORSP

- **ASSIST**(continued)
  - Pilot project currently underway
  - September 25 – P01, P20, P50, R24, U19, U24
  - January 25 and after – G12, P30, P40, P41, P42, P51, P60, R28, S06, U10, U41, U42, U45, U54, U56, Uc7, UM1
  - For more information see NOT-OD-12-161



# ORSP Update

Suzanne Alstadt, Director, ORSP

## **ORSP's New Employee**

**Inna Hemphill, CRA**  
**Sr. Grants Administrator**



# ORSP Update

Suzanne Alstadt, Director, ORSP

**Questions?**



# Audit Report for Grants

Janet Hopper, Grants & Cost Accounting

- **Grants Accounting**
- **A-133 Audit Report**
  - New Audit Firm-Pricewaterhouse Coopers, LLP
  - Findings
    - Subrecipient Monitoring
    - Equipment Management
    - ARRA Reporting





# CER Symposium & Data Resources

Dr. J. Mick Tilford, PhD  
Co-Director of CER component of TRI

- **Comparative Effectiveness Research Symposium**
  - **March 8, 2013, 12pm-4pm**
    - I. Dodd Wilson, G219
    - Lunch provided for registrants
    - RSVP to [behudson@uams.edu](mailto:behudson@uams.edu) by March 1 to register
  - **Keynote Speaker: Dr. Tim Carey, MD, MPH**
    - Co-PI of UNC Evidence-Based Practice Center
      - Chair of AHRQ Study Section
      - PCORI Consultant



# CER Symposium & Data

**Resources** Dr. J. Mick Tilford, PhD

Co-Director of CER component of TRI

- **IMS Pharmedics LifeLink™**
  - **Large sample of insurance claims**
    - Covers 6 million lives!
    - 2001- 2011
  - **Both Medical Claims and Pharmacy Claims**
    - Can compare hospitalized patients with different treatments
    - Can estimate offset effects on ED and hospitalizations associated with different treatments, pharmaceuticals, etc.



# CER Symposium & Data

**Resources** Dr. J. Mick Tilford, PhD

Co-Director of CER component of TRI

- **Pharmetrics LifeLink Scope of Use**
  - **Exploratory Research**
    - Prepare grant applications or other research that is not under grant/contract with agency or foundation
    - Non-Exploratory Faculty Research Requires a Separate Data Use Agreement with IMS Pharmetrics
  - **Support student research on campus**
    - Thesis for doctoral or master's students
    - Fellowship projects for clinical programs



# CER Symposium & Data Resources

Dr. J. Mick Tilford, PhD  
Co-Director of CER component of TRI

## ■ Access

### ■ TRI-Funded

- Faculty who are awarded funding through the UAMS TRI grant programs

### ■ Collaborative CER

- Students or faculty who will conduct CER analysis in collaboration with CER faculty



# CER Symposium & Data

**Resources** Dr. J. Mick Tilford, PhD

Co-Director of CER component of TRI

## ■ **Steps to Acquire Data Access**

- Complete the UAMS Data Use Agreement
  - Security Requirements
  - IRB Requirements
  - Acknowledgement Requirement



# CER Symposium & Data Resources

Dr. J. Mick Tilford, PhD  
Co-Director of CER component of TRI

## ■ Costs to Access

# FREE ACCESS!

- Free Limited Technical Assistance
- Free Access to Data Documentation
- Can discuss options for programming support
  - Whatever it takes to increase interest in exploring the data!



# CER Symposium & Data Resources

Dr. J. Mick Tilford, PhD  
Co-Director of CER component of TRI

- **Other Data Resources for CER**
  - Will be discussed in detail at symposium
  - HCUP – great resource for studying trends in hospitalizations
  - MEPS – used by many researchers to study health service utilization



# CER Symposium & Data Resources

Dr. J. Mick Tilford, PhD  
Co-Director of CER component of TRI

## ■ Contact Information

### ■ Bradley C. Martin, Pharm.D., Ph.D.

Phone: (501) 603.1992

Email: [bmartin@uams.edu](mailto:bmartin@uams.edu)

### ■ Mick Tilford, Ph.D.

Phone (501) 526-6642

Email: [TilfordMickJ@uams.edu](mailto:TilfordMickJ@uams.edu)





# Data Security Forum

Darri Scalzo, Research Compliance Officer

## ■ Announcement of Data Security Forum

- **Thursday, February 21, 2013 at 4:00 p.m.**
- Walton Auditorium in the WPR Cancer Institute
- Presentation on real life situations in which research data was at risk and tips for how to better protect your research data
  - Charlotte Hobbs, MD, PhD and Steve Barger, PhD will present
  - Elizabeth Thomas-Smith and Darri Scalzo will sit on panel to help answer your questions
  - Dorothy Graves, PhD will moderate



# Data Security Forum

Darri Scalzo, Research Compliance Officer

- **For more information, please contact:**

Darri Scalzo, 686-8062

Linda Williams, 686-7418



# Showcase of Medical Discoveries - Nanomedicine

Linda Williams, Research Liaison

- **Showcase of Medical Discoveries**
  - **Purpose** – To increase research visibility
    - Between UAMS colleges & colleagues
    - Highlight latest research in a topic area to donors & interested parties
    - Provide opportunity for building/connecting the UAMS research community
  - **Topic areas** (scheduled or in planning)
    - Cardiovascular – Nov. 29, 2012
    - Nanomedicine – Feb. 27, 2013
    - Bone – May/June 2013



# Showcase of Medical Discoveries - Nanomedicine

Linda Williams, Research Liaison

## ■ Nanomedicine Showcase

- Date = **Feb. 27, 2013**
- Time = **4:00 - 5:30 p.m.**
- Location = **WRI 10th floor rotunda**
- Format = **Wine/cheese mixer, research posters**



# Showcase of Medical Discoveries - Nanomedicine

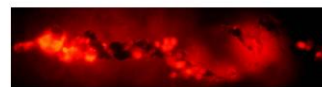
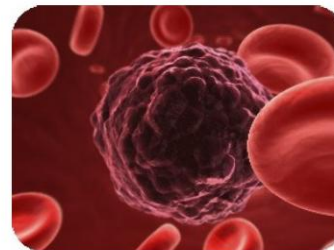
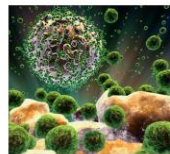
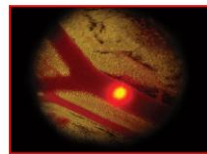
Linda Williams, Research Liaison

## UAMS College of Medicine Series

### Showcase of Medical Discoveries:

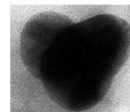
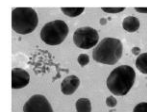
A focus on

### *Nanomedicine*



Wednesday, February 27, 2013

4:00—5:30 p.m.



Winthrop P. Rockefeller Cancer  
Institute Rotunda (10th Floor)

Please join us for a wine and cheese reception featuring UAMS investigators discussing their research and discoveries. This showcase is open to all interested faculty, students, staff and invited guests. The mission of this series is to foster communication and collaboration between investigators and to increase awareness of the exciting research at UAMS.

For more information, contact:  
Carol M. Skill (501)526-7633





# Showcase of Medical Discoveries - Nanomedicine

Linda Williams, Research Liaison

- **To Schedule & Host a Research Showcase, you need:**
  - A group of like-minded (i.e. topic) faculty researchers
  - Dedicated administrative support
    - Poster brochure development & advertising
    - Food ordering/serving on the day of the event
  - To contact Linda Williams  
([ldwilliams@uams.edu](mailto:ldwilliams@uams.edu), 686-7418)



# Next RESIN

## ■ Next RESIN

- **March 5, 2013 @ 12:00 p.m.**
- Location - **Walton Auditorium**, Winthrop P. Rockefeller Cancer Institute, 10<sup>th</sup> floor
- All RESIN presentations archived on the UAMS Research website
  - [http://www.uams.edu/research/RESIN\\_Achive.asp](http://www.uams.edu/research/RESIN_Achive.asp)