

**UAMS**

UNIVERSITY OF ARKANSAS  
FOR MEDICAL SCIENCES



# **Research Information Support Network (RESIN)**

**Presented by: Office of the Vice Chancellor for Research**

**Date: October 1, 2013**



# Agenda

## ■ Updates & Timely Information from Research Support:

⊕ Office of the VCR

RSC

IRB

IACUC

HIPAA

UAMS Library

⊕ Biomedical Informatics

COI

ORSP

ORC

DLAM

OGSP

⊕ Emergency Preparedness

⊕ TRI



# Emergency Preparedness

Ron Crane, UAMS Emergency Preparedness Manager

- **Emergency Preparedness**
  - Emergency Preparedness Steering Committee
    - Current state of preparedness vs. future of preparedness at UAMS
    - Dr. Cornett & Dr. McGehee on board
  - Academic Emergency Preparedness Subcommittee
    - Basic Science and DLAM together
      - Inclusion and prioritization



# Epic & Research Update

Angie Smith, LCSW, CCRP  
Research Operational Lead

## ■ HIGHLIGHTS

- **July 12:** Successfully pushed study records from CLARA to Epic
- **July 13-22:**
  - RCs updated study records in Epic
  - PB billers updated/activated studies in Epic
  - RCs registered active participants in C3PR
- **July 23:** Successfully pushed participants' study registration from C3PR to Epic
- **August 1:** Epic Wave 1A Go-Live



# Epic & Research Update

Angie Smith, LCSW, CCRP  
Research Operational Lead

- **100% Research Studies Required in Epic have been activated in Epic**
  - Studies utilizing UAMS clinical services
  - Studies active on 8/01/2013

**REMINDER:** All studies utilizing UAMS clinical services activated 8/01/2013 – on must be activated in Epic



# Epic & Research Update

Angie Smith, LCSW, CCRP  
Research Operational Lead

- **90% research teams completed C3PR study/participant registration** (for studies utilizing UAMS clinical services)
- **C3PR → Epic interface**
  - Provides study/ study patient linkage
  - Vital to ensure research-related procedures are billed correctly

**REMINDER:** All study participants must be registered in C3PR on date of consent.



# Epic & Research Update

Angie Smith, LCSW, CCRP  
Research Operational Lead

- **CRIMSON to CLARA budget conversion modifications required for:**
  - Active studies (e.g. open to enrollment or with study pts on active tx) utilizing UAMS clinical services
  - Must be completed by **December 31, 2013**
  - Contact TRI for assistance: 501.526.7685



# Epic & Research Update

Angie Smith, LCSW, CCRP  
Research Operational Lead

## ■ Questions?

**Angie Smith**

[SmithAngelaA@uams.edu](mailto:SmithAngelaA@uams.edu)

501.526.7796

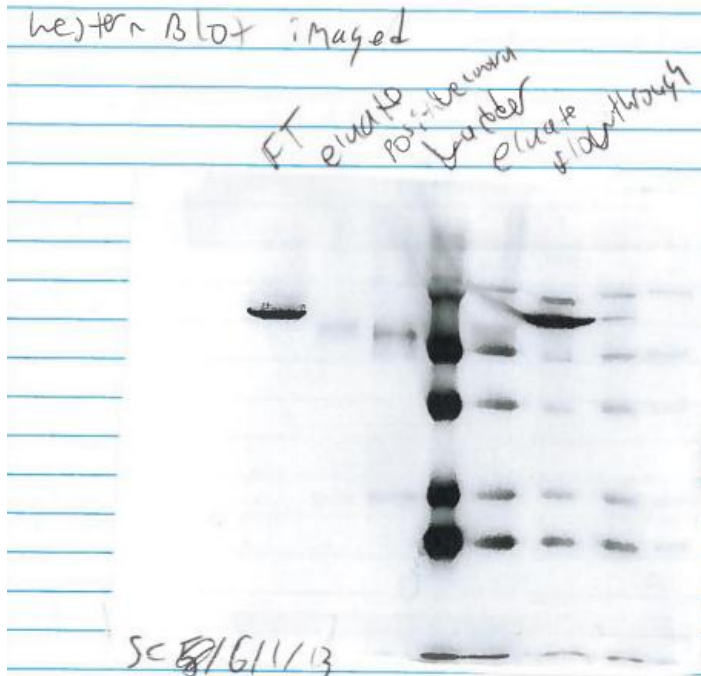




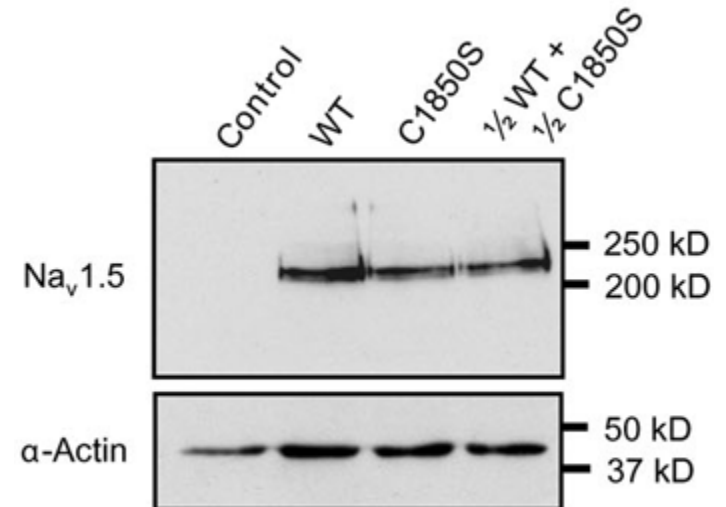
# Modification of Figures & Publication Rules

Larry Cornett, Ph.D.  
Vice Chancellor for Research

## “Before” Laboratory Result



## “After” Published Figure





# Modification of Figures & Publication Rules

Larry Cornett, Ph.D.  
Vice Chancellor for Research

- **Instructions for Preparing Figures**
  - Technology has made, and continues to make, the publication process faster, more accessible and robust.
  - Technology and applications, (e.g., Adobe Photoshop, have made it easier to manipulate data).
  - All accepted materials are evaluated for compliance with APS policies on image assembly and presentation.

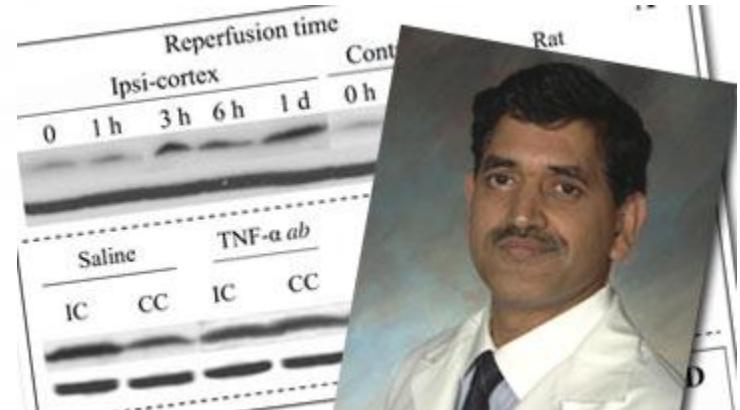
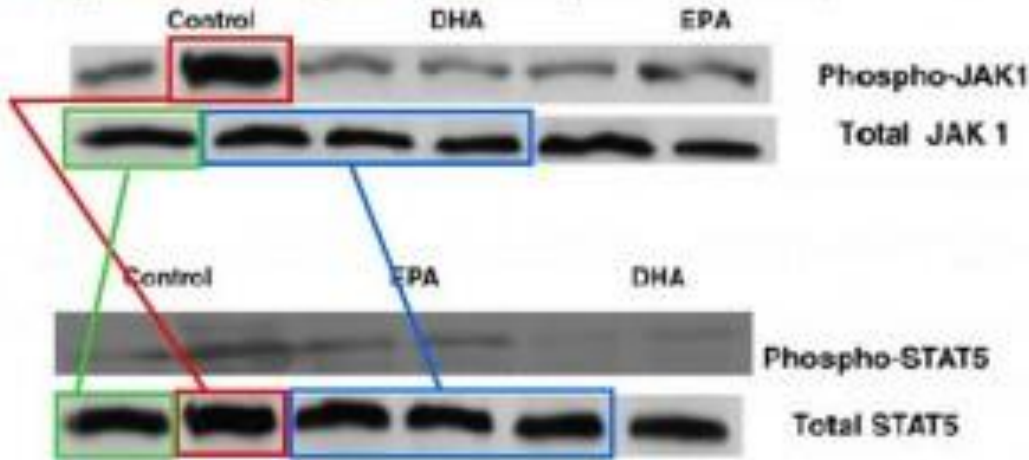


# Modification of Figures & Publication Rules

Larry Cornett, Ph.D.  
Vice Chancellor for Research

## ■ A particularly egregious example

Fig. 2, vs. Fig. 5. Multiple bands re-sized and re-used between blots for different proteins



Rao M. Adibhatia  
University of Wisconsin  
ORI Finding announced 1/25/2013



# Modification of Figures & Publication Rules

Larry Cornett, Ph.D.  
Vice Chancellor for Research

- **Instructions for Preparing Figures (cont.)**
  - Any question of improper manipulation that is raised during the review or editing process will be brought to the Editor and Publications Committee Chair for review. If called into question, authors should be prepared to provide the following information:
    - Original, unedited data/captures
    - Acquisition software
    - Information on image-processing software, as well as details regarding the operations performed

*The Journal of Cell Biology*  
*Nature*  
*American Journal of Physiology*  
*and others.....*



# CRIS-C3PR, Participant

## Registration System Umit Topaloglu,

Ph.D., Division of Biomedical Informatics

- **Comprehensive Research Informatics Suite (CRIS) is set of 27 integrated tools**
  - caBIG Clinical Central Participant Registry (C3PR)
    - CRIS' registration component
    - Gives granular access control per study
    - Integrated to UAMS' medical records
    - Now UAMS' policy for subject registration
    - Broadcasts registration to EPIC and other CRIS tools



# CRIS-C3PR, Participant Registration System

Umit Topaloglu,  
Ph.D., Division of Biomedical Informatics

## ■ C3PR Study and Subject

### ■ Study support

- Multiple consents, new versions/amendments
- Eligibility
- Randomization/stratification

### ■ Subject

- Consent(s) signed
- Arms, epochs and Identifiers
- Screen failure and off study reasons



# CRIS-C3PR, Participant Registration System

Umit Topaloglu,  
Ph.D., Division of Biomedical Informatics

## ■ C3PR With Numbers

### ■ Current usage

- More than 350 studies,
- More than 17,000 participants registered,
- 40 different UAMS groups (CCTO, TRI etc.).
- For registries
  - Cardiovascular Registry,
  - Sickle Cell Registry (being setup),
  - Research Participant Registry (will be implemented).





# CRIS-C3PR, Participant Registration System

Umit Topaloglu,  
Ph.D., Division of Biomedical Informatics

## ■ CTMS.UAMS.EDU

← → ↻ [ctms.uams.edu/web/guest/home](http://ctms.uams.edu/web/guest/home) ☆

**CRIS** **UAMS**  
UNIVERSITY OF ARKANSAS  
FOR MEDICAL SCIENCES

Welcome!

▸ Welcome   Access Request   Study Initiation Request   CRIS Application Tutorials



[Click here to sign in](#) ►

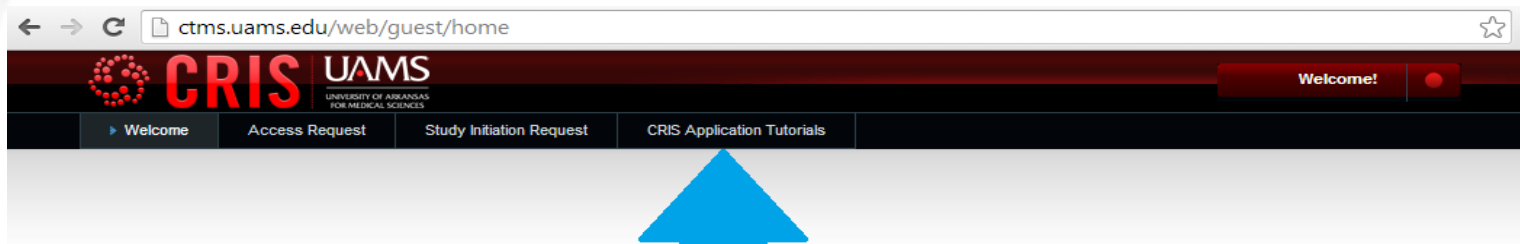




# CRIS-C3PR, Participant Registration System

Umit Topaloglu,  
Ph.D., Division of Biomedical Informatics

## ■ C3PR Training



[Click here to sign in](#) ▶



# CRIS-C3PR, Participant Registration System

Umit Topaloglu,  
Ph.D., Division of Biomedical Informatics

## ■ Questions?

Umit Topaloglu, Ph.D. [utopaloglu@uams.edu](mailto:utopaloglu@uams.edu)

Zhidan Feng, [zfeng@uams.edu](mailto:zfeng@uams.edu)





# UAMS Research Funding Outlook

Larry Cornett, Ph.D.,  
Vice Chancellor for Research

## ■ UAMS Research Funding Outlook





# UAMS Research Funding

**Outlook** Larry Cornett, Ph.D.,  
Vice Chancellor for Research

## ■ UAMS Research Funding - 2013

Campus	Total Costs (\$)	Change from FY2012
Arkansas Children's Hospital/ACHRI	24,555,265	↓ 9.4%
Veteran's Administration Medical Center	6,897,067	↑ 8.7%
UAMS	72,402,895	↓ 23.0%
	<b>103,855,227</b>	<b>↓ 18.7%</b>



# UAMS Research Funding

**Outlook** Larry Cornett, Ph.D.,  
Vice Chancellor for Research

## ■ UAMS Research – Grants Submitted

Fiscal Year	Number Submitted	\$ Amount Requested (millions)
2005	898	183.4
2006	870	177.2
2007	844	179.6
2008	805	177.9
2009	930*	246.5*
2010	807	396.5**
2011	790	186.3
2012	732	183.4
2013	541 (↓ 26%)	127.7 (↓ 30%)



# UAMS Research Funding

## Outlook Larry Cornett, Ph.D.,

Vice Chancellor for Research

### ■ UAMS Research – Grants Submitted

Fiscal Year	Number Received	\$ Amount Received (millions)
2005	509	95.2
2006	466	92.5
2007	436	85.5
2008	414	97.3
2009	412	83.7
2010	486	129.2*
2011	429	209.8**
2012	388	94.3
2013	254 (↓35%)	72.4 (↓23%)



# UAMS Research Funding

**Outlook** Larry Cornett, Ph.D.,  
Vice Chancellor for Research

## ■ UAMS Research – Funding by Source (FY2013)

Funding Agency/Source	Total Costs (\$)	% of Total
NIH	39,129,480	54.0
Other Federal	15,770,640	21.8
Other	574,713	0.8
Industry	3,948,397	5.5
Subawards (college/university)	6,121,284	8.5
Non-Profit	4,437,411	6.1
State/Local Gov't	2,420,970	3.3
Not Designated	0	0
	72,402,895	100





# UAMS Research Funding

**Outlook** Larry Cornett, Ph.D.,  
Vice Chancellor for Research

## ■ The Federal Landscape







# UAMS Research Funding

**Outlook** Larry Cornett, Ph.D.,  
Vice Chancellor for Research

## ■ Federal Funding Outlook

### ■ FY13 – Continuing Resolution until 3/27/13

- Fewer new awards
- Funding at up to 90% of approved amount (NOT-OD-13-002)
- Sequester reduced NIH budget by ~5%

### ■ FY14 – “It’s déjà vu all over again”

- Passage of Labor-HHS spending bill unlikely
- CR highly likely (to Mid-December)
- Debt ceiling battle this fall
- For NIH, see above FY13 scenario





# UAMS Research Funding

**Outlook** Larry Cornett, Ph.D.,  
Vice Chancellor for Research

- **Research Strategies** (in an era of shrinking research support)
  - Strategic program development (more investigators)
  - Efficient core facilities/support services
  - Optimal research space utilization
  - Adequate bridging support for productive researchers
  - Identification of alternative funding sources for research (e.g., industry, philanthropy)
  - Collaborative/team-based research
  - Successful CTSA renewal
  - Improved communication via technology (e.g., Profiles)



# Next RESIN

## ■ Next RESIN

- **November 5, 2013 @ 12:00 p.m.**
- Location - **Walton Auditorium**, Winthrop P. Rockefeller Cancer Institute, 10<sup>th</sup> floor
- All RESIN presentations archived on the UAMS Research website
  - [http://www.uams.edu/research/RESIN\\_Achive.asp](http://www.uams.edu/research/RESIN_Achive.asp)