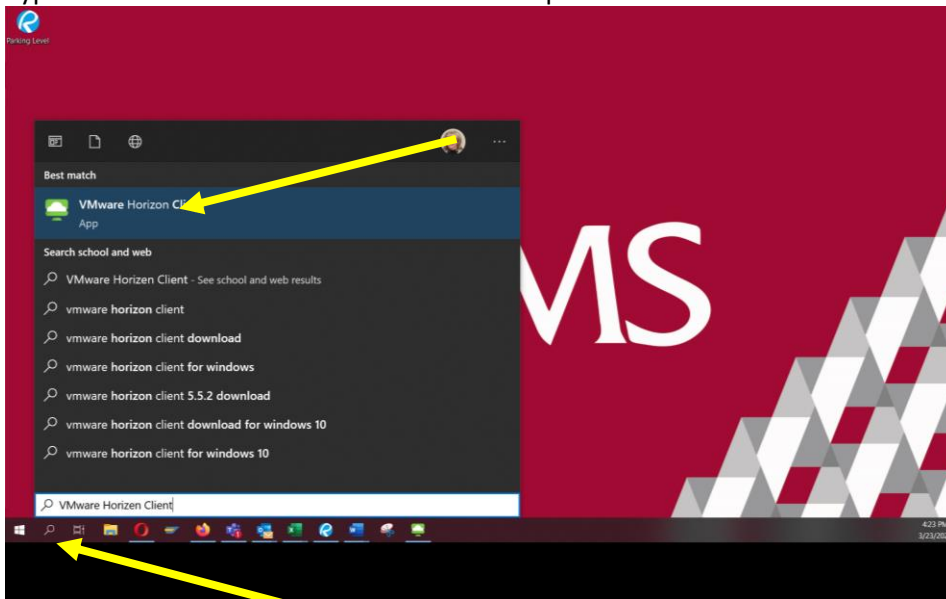


FM is set up for Single Sign On (SSO), so you do not need to log in when you are on campus.

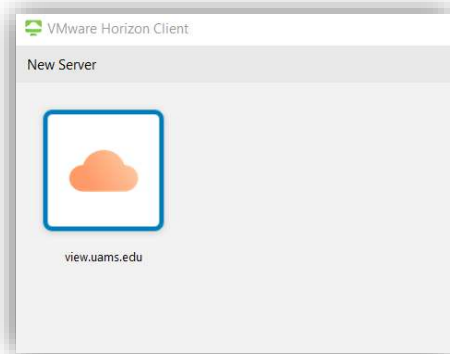
If you are working remotely but using your home network and “Global Protect,” you must then log on to Horizon Client, per UAMS security. Steps:

- Go to the search icon at the bottom of your screen
- Type in **VMware Horizon Client** and click to open

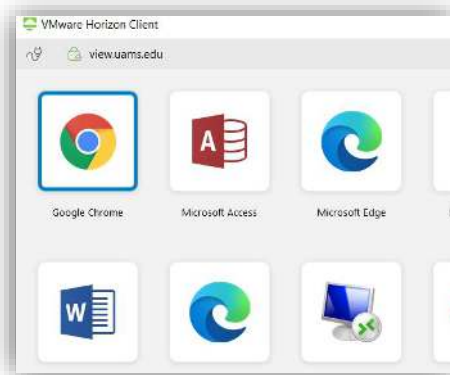


*If it does not exist, download the latest VMware Horizon Client from the web.

- Double Click on the **view.uams.edu** icon



- Double click on the **Google Chrome** icon



- When the new UAMS screen opens, copy and paste the link into the **web address bar** at the top of the page: <https://uams.fmshosted.com/FMInteract/Default.aspx>