

UAMS Research Administration



DLAM



IRB



IACUC



SciCom



OSPAR



ORSP



ORRA



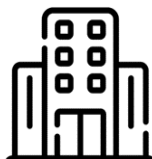
ORIS



**Research
Space Planning**



Scan Me



**Biomed
Buildings
Management**

UAMS[®]

Research & Innovation

RESEARCH & INNOVATION

Administrative Office

Daniel Voth, Ph.D., Vice Chancellor for Research & Innovation

Mohamed "Moe" Elasri, Ph.D., Associate Vice Chancellor for Research

Marie David, Executive Assistant

Mickey Thomas, Research Space Planner

Shanon Porterfield, Building Manager

Sreedevi Vaddi, Financial Manager

Eileen Mok, Research Program Manager



Administrative Office

Suite 459-2, 4th floor,
Biomedical Building II

research.uams.edu

----- Contents -----

Division of Laboratory Animal Medicine (DLAM)	P.1-2
Institutional Animal Care and Use Committee (IACUC)	P.3
Institutional Review Board (IRB)	P.4 -5
Office of Research Information Systems (ORIS)	P.6 -7
Office of Research Regulatory Affairs (ORRA)	P.8 -10
Office of Research and Sponsored Programs (ORSP)	P.11 -12
Office of Sponsored Programs Administrative Network (OSPAN)	P.13 -14
Research Space Planning & Biomed Buildings Management	P.15
Science Communication Group (SciCom)	P.16 -17
BioVentures	P.18 -21

Division of Laboratory Animal Medicine (DLAM)

- **The mission of UAMS's Division of Laboratory Animal Medicine is to support the humane use of animals in biomedical research and medicine at UAMS.**
- **We will consider all alternatives and protect the welfare of the animal models through exemplary care and practices in the discipline of laboratory animal medicine.**
- **UAMS complies with the Public Health Service Policy on Care and Use of Laboratory Animals and the Animal Welfare Act and is accredited through the Association for Assessment and Accreditation of Laboratory Animal Care (AAALAC) International.**

We offer help with all aspects of your animal project!

- ❖ Animal Use Protocol development
- ❖ Animal ordering (vendor and non-vendor sources)
- ❖ Husbandry services: special feed, water and enrichment
- ❖ Breeding colony maintenance
- ❖ Technical services: injections, blood draws, surgical procedures and tissue harvest
 - Experimental monitoring such as weight/BCS monitoring, tumor measurements, welfare checks
 - Clinical treatments

[Visit DLAM](#)



Division of Laboratory Animal Medicine (DLAM)

- DLAM will benefit from the 2022 NIH C06 facility grant (\$8 million); proposed renovation budget is \$13 million.
- Current animal facility is about 30,000 square feet; following renovation, it will be about 50,000 square feet.
- Animal census is about 3,800 cages — a 36% increase since 2017; renovated facility will hold up to 10,000 cages.
- DLAM provides veterinary service to Arkansas Children's Research Institute.



Christy Simecka
DVM, DACLAM
Director



Robin Mulkey, LATG
Facility Manager



John Lowery, DVM
Asst. Director of
Surgical Services



Bridgette Engi, LATG
Animal Services
Manager



Marlo Thomas
Business Manager



Deni Carey
Systems Analyst

[Visit
DLAM](#)

Institutional Animal Care and Use Committee (IACUC)

- Ensures animal welfare and compliance with laws, regulations and policies governing animal research (USDA, PHS, AAALAC)
- Serves UAMS and the Arkansas Children's Research Institute

❖ Confirms personnel certification and training

- Internal (health screening and Workday)
- External (CITI Program)

❖ Reviews and manages Animal Use Protocols (AUPs)

- Protocol creation/submission in Muse:
muse.uams.edu

❖ Performs semiannual site visits to animal housing and use areas

- Vivariums
- Laboratories



Jerry Ware, Ph.D.
Chair



Kerrey Roberto
Administrator



Lakeyia Cleveland
Coordinator

[Visit
IACUC](#)

Anonymous Report Animal Welfare Concerns
Compliance Hotline: 1-888-511-3969

The UAMS Institutional Review Board (IRB)

- **Protecting Human Subjects, Promoting Research**
- **Convened board AND an office review human subject research proposals to promote subject rights, safety, and welfare**
- **Collaborates with investigators to facilitate research**

Our services



PROCESS FOR DETERMINING WHETHER NEEDS IRB REVIEW AT ALL.



HAVE TEMPLATES AND POLICIES ON OUR WEBSITE; PROVIDE EDUCATION.



HELP YOU NAVIGATE THE CLARA SYSTEM.



COLLABORATE WITH YOU TO GET YOUR STUDIES IN SHAPE FOR REVIEW.



REMEMBER, THE IRB IS THE LAST OFFICE TO REVIEW HUMAN SUBJECT RESEARCH PROJECTS.

Fiscal year 2022 saw a total of 1,440 open human subject research studies. Of these, 305 were new approvals. These figures represent all types of study reviews — full board, expedited, exempt and studies for which we only conduct local context reviews.

[Visit IRB](https://research.uams.edu)

The UAMS Institutional Review Board (IRB)



**Edith Paal,
M.S. Journ.,
MPH, CIP,
CHRC
Director**



**Allen
Sherman,
Ph.D.**
IRB Chair –
Convened
Meetings



**Neitrisha
Harris, B.S.**
IRB
Administrator



Roxanne House
IRB
Administrator



**Jennifer
Newman,
B.A., CCRP**
Senior IRB
Administrator

Email us: irb@uams.edu
Voicemail at 501-686-5667

[Visit IRB](#)

Office of Research Information Systems (ORIS)

- **Provide leadership, business analysis and strategic planning in designing, creating and deploying solutions to address the cross-functional administrative issues for the University's research initiative.**
- **Work with the campus leaders, faculty and staff to design and implement solutions that impact the University's research community.**
- **Provide authorized individuals with convenient access to timely information on the status of proposals and awards.**
- **Support research administration to meet growing workload demands by managing MUSE, our electronic compliance and research management system.**

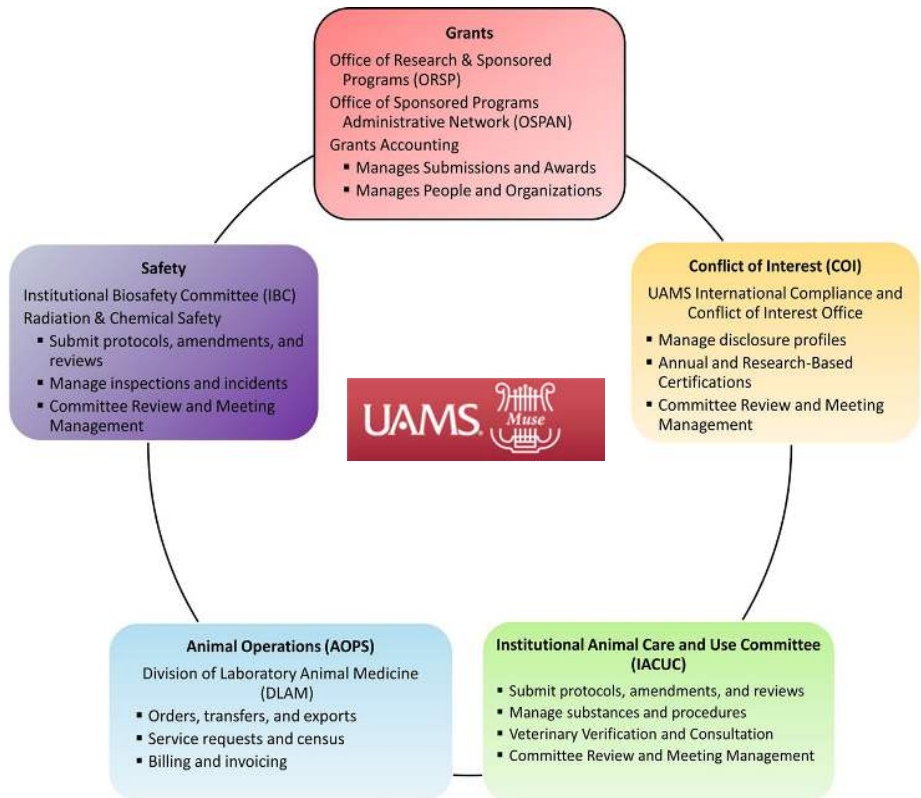


Anna Evatt, Ph.D.
Program Manager

[Visit ORIS](#)

Office of Research Information Systems (ORIS)

MUSE RESEARCH AND COMPLIANCE MANAGEMENT



[Visit ORIS](#)

Office of Research Regulatory Affairs (ORRA)

- We are a diverse team of experienced professionals who strive to understand and anticipate the needs of the UAMS research community, whom we are honored to serve.
- We provide essential support to develop well-designed, ethical studies that balance regulation with innovation in a continuously changing environment.
- We provide relevant education to the research community in an effort to create an environment in which best practices become standard practices.

Wondering if your investigator-initiated study requires an Investigational New Drug (IND) or Investigational Device Exemption (IDE)?

ORRA's experts provide a number of support services:

- * Regulatory * Monitoring * Good Tissue Practice (GTP)
- *ClinicalTrials.gov

ORRA's diverse team of professionals can assist with all stages of your research studies:

- Regulatory Analysis: IND/IDE Determination
- Study Planning: Protocol and Case Report Form development
- Study Start-up Activities: FDA submission, assistance with IRB submission
- Study Management: Monitoring and regulatory duties/activities, annual reports
- Study Close-Out: Performing final monitoring, FDA submission, assistance with IRB submission
- ClinicalTrials.gov: Assistance with registration and maintenance

[Visit ORRA](#)

Office of Research Regulatory Affairs (ORRA)

- Nineteen active IND/IDE studies
- Additional 11 studies in the process of FDA submission or study start-up
- Receive 150-200 requests annually to review protocols for IND/IDE determinations
- Conduct >100 monitoring visits (days) annually at UAMS, ACH, UALR
- Oversight of >100 study records/year on ClinicalTrials.gov

ClinicalTrials.gov
For assistance with ClinicalTrials.gov,
email
ORRAClinicalTrials-govadmin@uams.edu

[Visit ORRA](#)

Office of Research Regulatory Affairs (ORRA)



**Laura Adkins, MAP, CCRP,
CCRA, CRS, AdvCRS**
Director



Cesiley Trevino, MSHP, CCRP, CRS
Clinical Research
Monitoring Manager



Beatrice Huey, BSW
Good Tissue Practices
Specialist



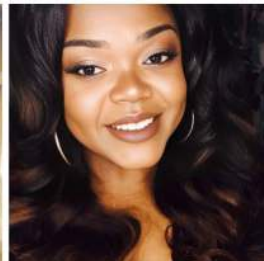
Janet Storment, RN, CCRP
Research Regulatory
Specialist III



Crystal Smith, MSW, MA
Clinical Research
Monitoring Specialist



Brenda Gannon, Ph.D.
Manager of Regulatory
Affairs & QA



Kacy Wright, Ph.D.
Research Regulatory
Specialist I

[Visit ORRA](#)

Office of Research and Sponsored Programs (ORSP)

The mission of the UAMS Office of Research and Sponsored Programs (ORSP) is to provide support for UAMS faculty, staff and students in the acquisition, performance, and administration of projects and programs funded by extramural sources.

What we do?

- Review and approve all proposals sent to sponsors to ensure that proposals comply with federal, state and institutional policies as well as sponsor requirements.
- Negotiate the terms and conditions of all awards with a primary focus on protecting the rights of the investigator and the University.
- Serve as the primary liaison between the investigator and the sponsor regarding budgetary and administrative issues.
- Serve as authorized signatory for all research-related agreements.
- Draft and negotiate subcontracts to other universities and entities.

[Visit ORSP](https://research.uams.edu)

Office of Research and Sponsored Programs (ORSP)



Andrea Ham, B.S., CRA
Senior Director



Inna Hemphill, B.A., CRA
Senior Grants Administrator



Jana Bennett
Grants Administrator



Scarlett Rice, B.S.
Grants Administrator



**Shondalyn
Williams**
Grants Administrator

[Visit ORSP](#)

Office of Sponsored Programs Administrative Network (OSPAN)

The mission of the UAMS Office of Sponsored Programs Administrative Network (OSPAN) is to provide sponsored programs administration to all Principal Investigators and their administrative departments at the University of Arkansas for Medical Sciences.

What we do?

- Provide submission assistance that includes assisting with required documents such as budgets, biosketches, collecting subaward information, and ensuring the formatting and technical requirements of submissions are met.
- Enter funding proposal into UAMS Research program “Muse” to track research proposals and awards as well as utilize software to feed proposal into sponsor submission portal.
- Assist with establishment of grant account in Workday financial system upon receipt of a project award.
- Provide monthly financial reporting and projections to Principal Investigators to assist with managing grant expenditures and spending plans for the life of the grant award.
- Assist departments with preparing close out documents to allow Grants Accounting to submit financial reports to the sponsors.

FY23 Statistics

[Visit
OSPAN](#)



Supported 312 faculty
Submitted 570 grant proposals
Supported 615 grants accounts

Office of Sponsored Programs Administrative Network (OSPAN)



**Tyrone
Stephens, CPA,
CRA**
Senior Director



**Angie Brock,
CRA**
Senior Research
Administrator -
Lead



**Amanda
Richards**
Senior Research
Administrator -
Lead

Research Administrators

Amanda Whittaker, CRA

Judy Whaley

Antonia Conley

Kathy Rowland

Bettie Cook, CRA

Kim Tarkington

Brandi Koscielny

Michelle Butler

Carmesha Jemerson

Mary Ann McRaney

Christina Hamilton

Randall Leavell

Dana Ball

Renea Brazil, CRA

Jeff Pratt

Sherrie Wylie

Josyphine Chen

Wendy Stimler

[Visit OSPAN](#)

Research Space Planning & Biomed Buildings Management

Our mission is to help create efficient, functional and safe environments and to best utilize space to support the specific needs of UAMS researchers, scientists and other professionals supporting research.

Over 400,000 square feet on the UAMS main campus is designated as research.

BUILDING	FT ²
Biomedical Research I&II	255,600
Cancer Institute	62,300
Aging, Eye, PRI, Spine	42,400
Other	40,500

- The Space Planner manages FM Systems Higher Ed, UAMS' space database, to best optimize and allocate research space.
- We assist with space and buildings needs such as:
 - Laboratory and office space planning assistance and assignments
 - Capital project requests involving research space
 - Requests for keys and badge access
 - Work orders
 - Move team/M&R coordination



Mickey Thomas
Research Space Planner



Shanon Porterfield
Building Manager

[Visit Research Space Planning & Biomed Buildings Management](https://research.uams.edu)

Science Communication Group (SciCom)

**We offer a scientific editing resource
to UAMS investigators at no cost!**

- Our primary mission is to help investigators produce clear and concise writing to increase their chances of obtaining extramural research funding or publishing in peer-reviewed journals.
- Our editing work ranges from proofreading for grammar and usage to more substantive editing to improve the organization and presentation of writing.
- SciCom can assist in the preparation and submission of large, complex multi-component funding proposals (e.g., COBRE, P01, P50).
- We offer an annual “Grant-Writing Bootcamp,” as well as other presentations on request.

Contact:
Kerry Evans, Ph.D., ELS
klevans@uams.edu

[Visit SciCom](#)

Science Communication Group (SciCom)



**Kerry L. Evans,
Ph.D., ELS**
Associate Director



**Meredith Joheim,
M.S., ELS,**
Editor



**Eric Rathman,
M.S., ELS,**
Editor



Bettie Cook, CRA
Senior Research
Administrator



**Peggy Brenner,
Ph.D., ELS**
Editor



**Emily L. Hunter,
Ph.D.**
Editor

[Visit SciCom](#)



We Bring UAMS Ideas to Market!

Technology Commercialization

**Prototype Creation: Devices,
Software**

**Researcher Support: Material
transfers, Joint inventions, External
contracts (industry and academia)**

Startup Support

Industry Collaboration

Researcher Education

**Promotion and Tenure Committee
Support**



We Bring UAMS Ideas to Market!

**Intellectual Property: Patents,
Copyrights**

**Funding for Investigators:
Development Award**

Incubator with Lab Space

**Grant Support: Partnering and
writing grants for tech development
and education**

Due Diligence

Policy Development

Entrepreneur-in-Residence Program



Eric Peterson, Ph.D.
President



Rebecca Todd
Grant Writer



John Sherrill, Ph.D.
Technology Manager



Stefanie Kennon-McGill, Ph.D.
Program Manager



Rob Griffin, Ph.D.
VP of Small Business
Concerns



John Imig, Ph.D.
VP Technology Acceleration



Adria Abella
Engineering Team



Jay Gandy, Ph.D.
Entrepreneur in Residence



Julia Massana
Marketing



Michael Geranen
Technology Manager



[Visit BioVentures](#)